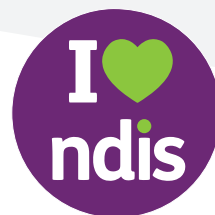




In this document we explain what **Supported Independent Living** means



Supported Independent Living is also known as SIL



SIL is an NDIS support



Your SIL funding in your NDIS plan pays for the people who support you



Our SIL service supports you to live in your own home



All housemates will share similar likes and interests



Our shared living homes support you to:

- Get out in the community
- Be more independent
- Make your own decisions



We will work together to find your ideal home. Some things we will think about are:

- The area of your new home and travel times
- What support you will need
- Making sure you and your housemates get along
- Matching you with support staff that also like the same things
- The equipment or furniture you may need
- How we can help you decorate the house to make it feel like your home
- How we can support you on moving day

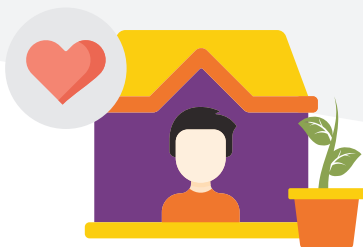


Our homes include:
Houses or Villas



Our support staff support you when you need it for things like:

- Cooking
- Cleaning
- Laundry
- Personal Care
- Going to appointments or social activities



Our supported homes are a place for you to call home



You are the decision maker which means you get to decide on activities and what happens in your house



If you live with other people, you will make household decisions together

UNISSON
DISABILITY

For more information on finding your ideal home, contact our friendly Client Engagement team.

☎ **1300 266 222**

✉ **hello@unisson.org.au**

🌐 **unissondisability.org.au**